

HID-AspiraVision Compact Independent for CDM

HID-AV C DALI 70 /I CDM 220-240V 50/60Hz

Compact, lightweight and easy to use high performance range of intelligent electronic gears for optimal performance of 35W, 70W, 100W and 150W CDM lamps

Product data

• Product Data

Order code	913700647166
Full product code	913700647166
Full product name	HID-AV C DALI 70 /I CDM 220-240V 50/60Hz
Order product name	HID-AV C DALI 70 /I CDM 220-240V 50/60Hz
Pieces per pack	1
Packing configuration	12
Packs per outerbox	12
Bar code on pack - EAN1	8727900944006
Bar code on outerbox - EAN3	8727900944013
Logistic code(s) - 12NC	913700647166
Net weight per piece	0.330 kg

• General Characteristics

Interface	DALI
Rated Number of Lamps	1 piece
Rated Ballast-Lamp Power	70
Rated Lamptype	CDM
Application code	-
Line Voltage	220-240 V
Line Current	0.45 A
Line Frequency	50/60 Hz
Housing	/I
Lifetime 90% surv.@Tcaselife	40000 hr
Suitable for Outdoor use?	No

• Operating Characteristics

Automatic restart	Yes
Inrush current Peak	8 A
Inrush current Width	10 ms
Lamp Power Tolerance	-3%/+3%
Mains voltage safety (AC)	-18%/+10%
Mains voltage performance (AC)	-10%/+6%
Min. Mains voltage operational	198 V
Output peak voltage	4000 V
Overvoltage protection 320Vac	48 hr
Overvoltage protection 350Vac	2 hr
Overvoltage protection 400Vac	5 min
Ignition switch-off time	19 min
Ignition Voltage	3.0 (min), 4.0 (max) kV
Hum and Noise level	20 dB(A)

• System Char's on driver level

Lamp Power on CDM	79
Power Loss on CDM	6

• Wiring Characteristics

Cable-Cap output-wires mutual	240 pF
Connector type	Insert
Max. cable length Device/Lamp	3 m

PHILIPS

sense and simplicity

HID-AspiraVision Compact Independent for CDM

Striplength 10.0-11.0 mm
Wcs Ballast contacts 0.75-2.50 mm2

Approval marks ENEC / CE / VDE-EMC
CE marking Yes
ENEC certificate Yes
VDE certificate Yes
VDE-EMV certificate No
CB Certificate Yes

• Temperature Characteristics

Active temperature protection Yes
F-marking Yes
T-case switch-off 85 C

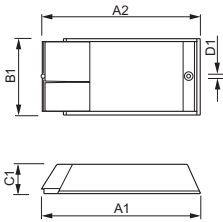
• Approval & Application Char's

EMI 9 kHz ... 300MHz CISPR 15 ed 7.3
Vibrations IEC 68-2-6 Fc
Bumps IEC 68-2-29 Eb
Humidity EN 61347-2-12 and 1 generic

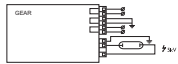
• Product Dimensions

Length A1 188 mm
Fixing Hole Distance 170 mm
Length A2 83.0 mm
Width B1 34.5 mm
Height C1 4.8 mm
Fixing Hole Diameter D1

Dimensional drawing



Product	A1 (Norm)	A2 (Norm)	B1 (Norm)	B2 (Norm)	C1 (Norm)	D1 (Norm)
HID-AV C DALI 70 /I CDM 220-240V 50/60Hz	188	170	83.0	-	34.5	4.8



© 2011 Koninklijke Philips Electronics N.V.
All rights reserved.

Specifications are subject to change without notice. Trademarks are the property of Koninklijke Philips Electronics N.V. or their respective owners.

www.philips.com/lighting

2011, March 30
data subject to change